

# FIRETECT® SEALANTS

FIRE RATED MASTICS

FOR FIRE SEALING OF PENETRATIONS, CONSTRUCTION OPENINGS,  
GAPS AND LINEAR JOINTS



# KLF

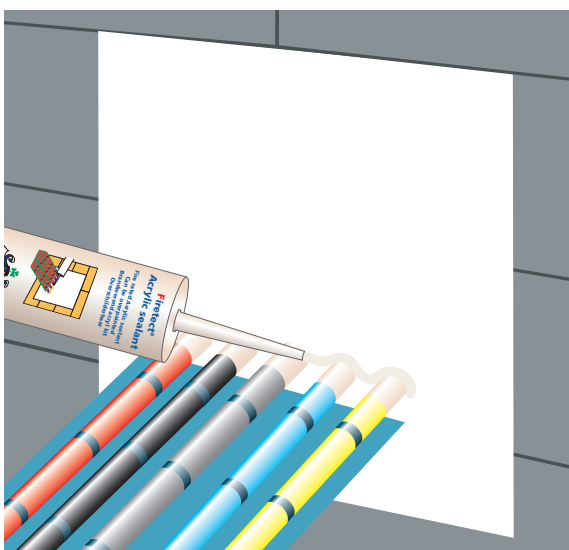
Building Products

## Fire rated mastics

When designing a building, fire performance is one of the key requirements. In order to meet the minimum fire performance level, the building codes prescribe a building to be divided into fire compartments: fire sealed areas to prevent spread of fire to connecting or adjacent areas or floors.

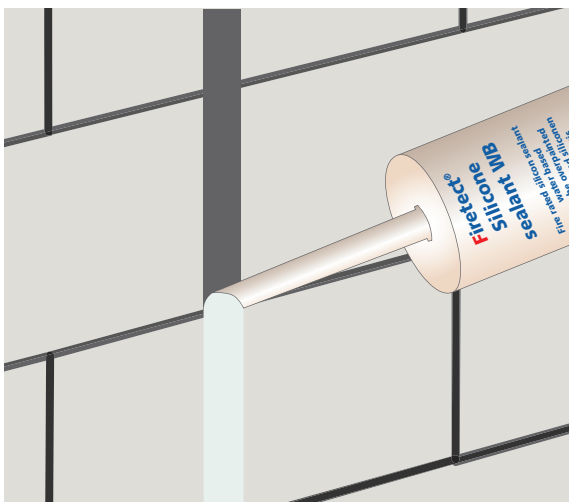
### Penetrations

Fire compartments can be seriously compromised if penetrations for building services have been insufficiently protected. These building services, such as cable trays, HVAC ducts, shafts and pipes penetrate through compartment floors, walls or ceilings. Fire sealing these penetrations is crucial, for they are the 'weakest' link in the fire compartment. In a fire situation, every unsealed penetration will lead to horizontal and vertical fire spread into adjacent compartments!



### Construction openings, gaps and linear joints

It is not just penetration openings that require fire sealing. Also construction openings, gaps and linear joints with a diameter of  $\geq 25$  mm or with dimensions of approx. 3-4 mm, must be suitably protected to prevent fire spread. In order to avoid a passage for smoke and toxic gases, openings should be 100% fire sealed.



### NEN 6068:

-Resistance to WBDBO (Fire Propagation and Flash Over)

### NEN 6069:1997

-Criteria for fire sealed openings in the fire compartment; openings  $\varnothing \geq 25$  mm or dimensions  $\pm 3-4$  mm. Parameters are stability, integrity and thermal insulation (classified as R, E & I in Europe).

### Fire protection: a matter of details

Proven and tested fire seals determine the ultimate level of fire performance. Sealants represent only a small part of the total construction costs, yet can often provide the protection to building and life safety that is required. Using a 'wrong' mastic can actually contribute to the fire!

### Use the right sealant

There are several variants of mastics on the market for many applications. Only a few of them are actually suitable for their contribution to fire containment in buildings. Firetect® sealants are not only proven fire seal products, they also stand out for their multi-application, ease of handling and good value for money.

## Firetect® sealants

**Firetect® Silicone sealant** is an all-round, elastic silicone mastic for fire sealing penetrations, construction openings and gaps, as well as linear joints in masonry and concrete constructions or around large HVAC ducts. **Firetect® Silicone sealant** has an excellent fire performance – tested up to more than 7 hours (!), has a superior adhesive ability and can be applied on most common construction materials without using any primer. The mastic is a fire retardant neutral curing polysiloxane (alcoxy) mastic.

Thanks to its intumescent characteristics and high pressure expansion, **Firetect® Acrylic sealant** is specially developed for penetrations and connecting joints with small movement. Moreover, **Firetect® Acrylic sealant** is also very suitable for fire sealing around building materials which burn or 'sublime' in case of fire such as plastic pipes. Pipes with a diameter of  $\leq 50$  mm can be fire-stopped using **Firetect® Acrylic sealant** with a fire performance up to more than 3 hours.

**Firetect® Acrylic sealant** can be applied without any primer on most common construction materials. The dispersion based mastic can be coated with an alkyd coating or water based coating (dispersion).



## The Firetect® concept

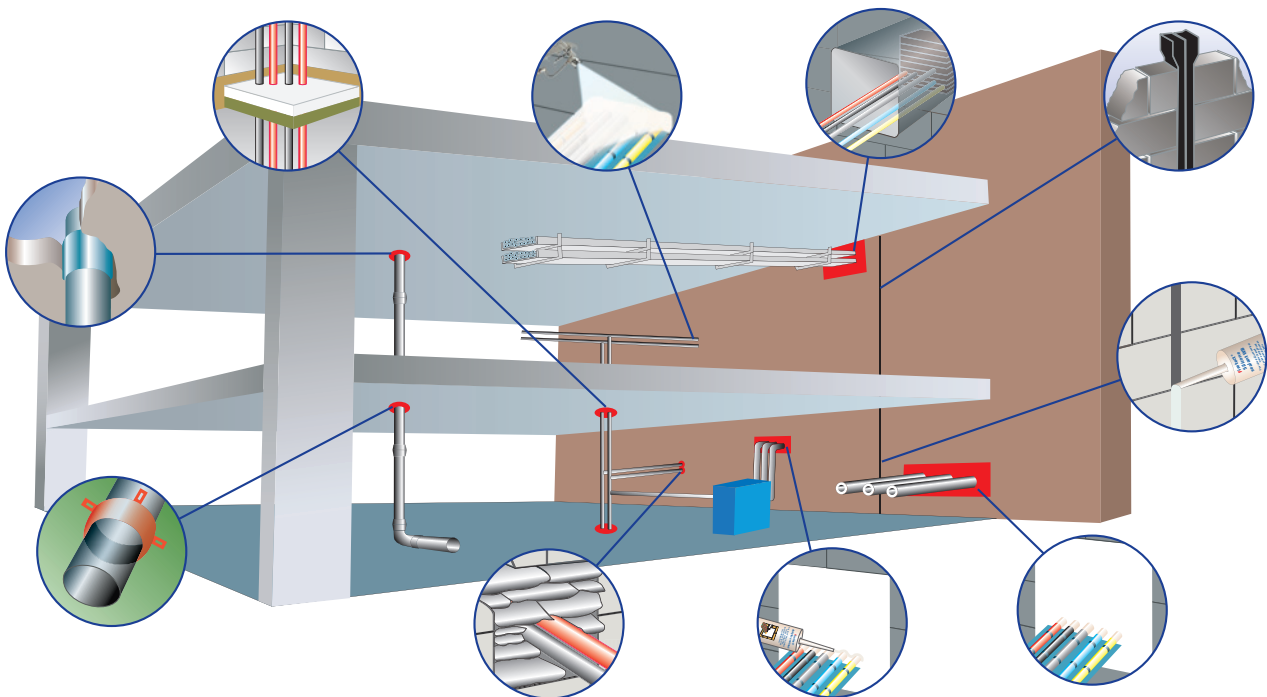
It is often the combination of various building products (passive fire protection) and high-tech equipment (active fire protection) that make fire safe building a complex issue. Depending on the site requirements, different types of fire seals are needed.

**KLF Building Products** is an all-in-one supplier. All our **Firetect®** products are fully complimentary. This does not only result in safety and ease of use, but also prevents waste, failure costs and expensive corrective measures!

**Firetect®** products are applied by contractors, specialised in fire protection. Because it is often site and orientation specific and fire stopping installations must meet the local building standards, **KLF Building Products** strongly recommends putting fire performance in the hands of professionals. Passive fire performance is a long-term investment. We therefore recommend to conclude a maintenance contract with the installation company.

Technical installations are subject to change and maintenance. Penetrations should be periodically checked and restored in order to guarantee the fire performance. The authorities strongly promote the legislation on passive constructive fire protection.

Considering the complexity of the legislation, standards and test results, **KLF Building Products** advises consultation with a fire safety engineer for every non-standard or complex site requirement. No rights are implied from information presented within this brochure, test reports or test results. **KLF Building Products** reserves the rights to make changes to its published technical information without prior notice.



### Product characteristics

#### Firetect® Silicone sealant

- 🔥 one component silicone mastic, alcoxy based
- 🔥 fire and smoke resistant
- 🔥 tested acc. building codes up to more than 7 hours
- 🔥 flexible, elastic
- 🔥 neutral curing
- 🔥 applicable both internally and externally
- 🔥 excellent adhesive ability on most common building materials
- 🔥 environmentally and user friendly
- 🔥 very good value for money

### Product characteristics

#### Firetect® Acrylic sealant

- 🔥 acrylic mastic, dispersion based
- 🔥 fire and smoke resistant
- 🔥 tested acc. building codes up to more than 3 hours
- 🔥 plasto-elastic, intumescent
- 🔥 almost odourless and free of solvents
- 🔥 all-round use, fire seals for plastic pipes  $\leq \varnothing 50$  mm
- 🔥 excellent adhesive ability on most common building materials
- 🔥 environmentally and user friendly
- 🔥 very good value for money

More product data as well as information on application and safety are stated on resp. **Firetect®** product and safety datasheets. These are available upon request.

# Firetect®

## For fire safe building

### **KLF Building products = all-in-one supplier**

KLF Building Products is international all-in-one supplier of high performance passive fire protection products. All Firetect® fire resistant products are high quality, tested according to the Dutch and international standards, durable, user friendly and fully complimentary. Applying the products result in a considerable cost saving. Together with in-house expertise and innovative entrepreneurship, KLF Building Products has proved to be a very reliable partner in creating fire safe building

Whether you use steel, wood or concrete, Firetect® products offer you an all-in-one solution for meeting constructional, economical, esthetical or acoustical challenges in fire safe building.

### Delivery program of KLF Building Products

#### **Firetect® resistant cladding**

fire resistant board materials for steel, concrete or wooden supporting constructions

#### **Firetect® fire stopping range**

fire seals such as collars, cable transits, mortar and cable coatings

#### **Firetect® Steel coating WB**

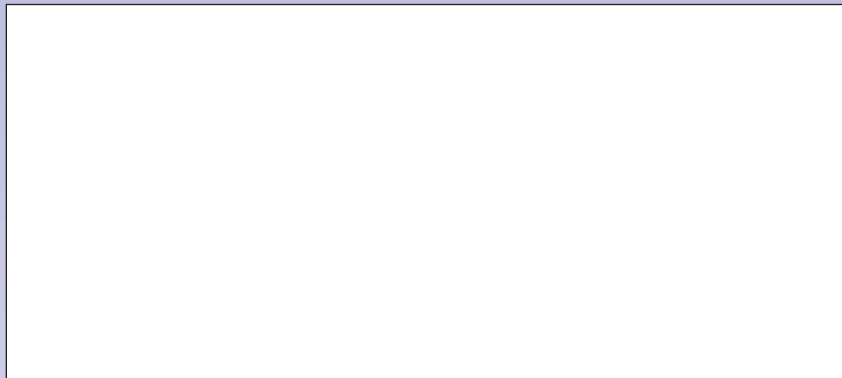
fire resistant steel coating for both internal and external\* use

\* top coating required

#### **Firetect® Silicone en Acrylic sealants**

fire rated mastics for penetrations, construction openings, gaps and linear joints

## Your dealer



**Firetect® is a registered product of:**

**KLF Building Products**

Box 234

4140 AE Leerdam

T (+31) 345 63 97 97

F (+31) 345 63 97 90

internet [www.klf.nl](http://www.klf.nl)

e-mail [info@klf.nl](mailto:info@klf.nl)